

## Barr Enterprise Print Server

Barr Enterprise Print Server gives you complete control of printing and routing network documents. You can direct files from the LAN, Windows programs, or host computers to a variety of destinations, including printers and other hosts.

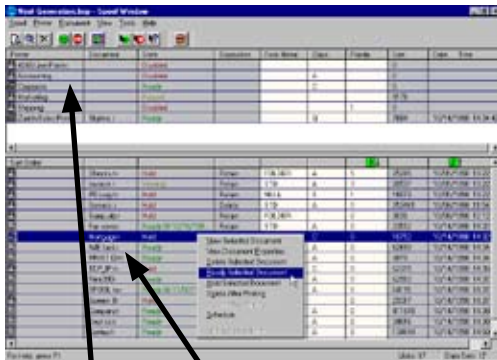
You can manage the routing of all documents from a single, combined print queue. At a glance, you get a comprehensive view of all documents and printers, instead of having to open separate windows to view individual Windows queues for each destination device. You can also fully customize the queue display. While the spool is operating, you can sort the documents a variety of ways and change what type of information displays for each document without interrupting spool activity. In addition, you can launch viewers for print files such as AFP, PCL, PDF, PostScript, TIFF, and Xerox Metacode right from the spool window.

Control of documents and printers is at your fingertips. You can manually change document routing criteria, such as copies and priority, by editing the information displayed on screen. With a click of the mouse, you can start and stop all spool activity, start and stop individual documents or printers, or send commands to reset printers. If a printer jams, you can quickly redirect documents to another device.

Advanced features include routing copies of a single document to several different printers or automatically overriding document routing criteria. You can also use built-in utilities to create print banners and FCBs.

And you can make use of the spooler services, which provide the following advantages:

- Operate Barr Enterprise Print Server in the background, even when programs are closed.
- Log on or off the computer where Barr Enterprise Print Server is installed without interrupting spool operation.
- Set up services to start automatically when you start the computer. If the computer restarts during unattended operation, spool operation can automatically restart.



Your printers and jobs are displayed on one easy-to-manage screen. Drag and drop, as well as automated spooling, are as easy as point-and-click.

Before releasing jobs to the printer, BEPS allows you to proof them for integrity—right from the spool window.



## Features & Benefits

- Simplifies print and document distribution by centrally managing your output from one location
- Helps to ensure that all printers are being used to their maximum potential by recording accounting data for completed print transactions
- Automates your organization's production printing through a built-in scheduling system
- Receives files from a variety of sources, including Windows programs, TCP/IP hosts, mainframes, Unix machines, and network directories\*
- Routes files to multiple destinations, including channel, network, parallel, and serial-attached printers, network directories, storage devices, and data transform software\*
- Supports the following formats: ASCII, EBCDIC, AFP, Adobe PDF and PostScript, Xerox Metacode and LCDS, and PCL



## Features & Benefits cont'd

- Drives an unlimited number of printers
- Supports viewers for AFP, Adobe PDF and PostScript, PCL and Xerox Metacode and LCDS
- Controls User access and provides personalized settings for different operators
- Supports unattended operation
- Processes jobs independently of one another with no arbitrary limits on the number of concurrent tasks
- Performs automatic load balancing (or load sharing) by distributing new jobs evenly among the available printers
- Manages and stores host resources (FCB, UCS)
- Manages forms overlays (EBCDIC or ASCII files)
- Supports electronic forms, replacing pre-printed forms
- Provides multiple-copy printing
- Displays real-time status for each printer
- Reprints and restarts at any location within the job
- Prints nonstop during spool viewing and reprinting

*\*May require the use of optional modules.*

## Requirements

### Software:

- Microsoft Windows XP Professional, Microsoft Windows 2000, or Microsoft Windows 2003 Server
- Microsoft Internet Explorer version 5.5 or later

### Hardware:

#### Minimum:

- 1.0 GHz Pentium processor
- 512 MB of RAM
- 30 GB Hard Drive
- CD-ROM drive
- SVGA Display
- Parallel or USB port
- PCI slots half-length and full-height for Barr adapters

#### Recommended:

- 2.8 GHz Processor with Hyper threading
- 1 GB of RAM
- 36 GB SCSI or SATA Hard Drive
- CD-ROM-RW or USB Flash Drive
- Configured/Tested backup system (dependent on downtime tolerance)

*Note: These are basic recommendations. Specific requirements are dependent on the operating system, expected production volume, and other applications.*

## Options

### BEPS Input Modules:

- BARR/RJE transfers files between mainframes and remote locations
- BARR/NJE connects to IBM mainframes and exchanges jobs between host and network
- BARR/PRINT TCP/IP captures print from TCP/IP hosts
- BARR/PRINT CHANNEL captures 3211 print streams via Bus & Tag or ESCON®
- BARR/PRINT CHANNEL for IPDS routes Intelligent Printer Data Stream (IPDS) from a mainframe via Bus & Tag or ESCON® to a TCP/IP-connected printer

### BEPS Output Modules:

- BARR/PRINT390 connects up to eight channel-attached printers
- BARR/PRINT390 for IPDS connects to Intelligent Printer Data Stream (IPDS) channel printers
- BARR/PRINT to EPS captures Xerox print files from the mainframe and sends them to network-attached Xerox DocuPrint Enterprise Printing Systems
- BARR/PRINT SPLITTER splits large jobs and sends them to multiple printers

### Transformation and Viewing Options:

- BARR/PRINT AFP prints AFP data on PCL® and PostScript® printers
- BARR/TRANSFORM transforms Xerox Line Data & Metacode to PostScript, PCL, or PDF
- BARR/TOOLS allows you to view, reprint, and optimize your Xerox Line Data & Metacode
- BARR/Web Interface controls your Barr Enterprise Print Server via the Web